



# LEADER TIC 4.3

High Resolution Thermal imaging camera

## Efficient and versatile = 3 buttons + 4" display

Particularly suitable for the First attack. LEADER TIC 4.3 offers unbeatable value and best quality, combined with all important features: ideal for firefighting, first attack, search for missing persons and fire...



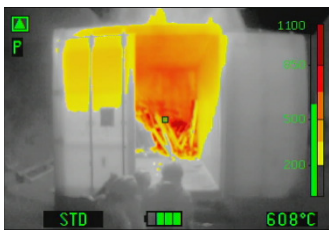
### Outstanding features:

- Compact 175 x 145 x 97 mm
- Lightweight 950gr with 2 batteries and side straps.
- Large 4" display for detailed visibility
- Widest detection range: -40 °C to +1150 °C
- Video recording, picture capture and image freeze
- Batteries: 6 year warranty, 5000 charging cycles
- Safe batteries (LiFePO4): for high temp operations
- With ECO BOOST System for extended running time
- Up to 8h running time (2 batteries) with Eco-Boost-System (up to 60% additional running time than previous model)
- Removable Pistol grip option
- Boot time: less than 5 sec
- 3 Large buttons: easy to operate even with gloves
- Functions:
  - ON/OFF
  - Zoom x2 x4
  - Colorization selection (3 or 5 modes)
  - Image freeze / picture capture (option)
  - Video recording (option)
  - Replay picture and video on screen
  - Laser pointer (option)



### Colour schemes:

LEADER TIC 4.3 offers 3 colour schemes as standard: Fire, Search, and Inverse  
+2 colour schemes as option: Cold Finder and Multicolour



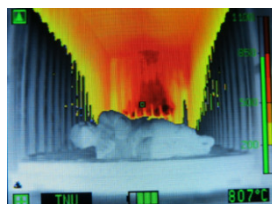
**STD / FIRE:**  
 Dark Red >850 °C  
 Red > 675 °C  
 Orange > 500 °C  
 Dark Yellow >350 °C  
 Yellow > 200 °C  
 White = Hot  
 Black = cold



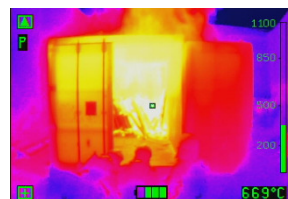
**SEARCH:**  
 2 hottest % coloured in Red  
 and the 5 following hottest %  
 in Yellow-Orange.



**COLD Finder:**  
 Blue colour  
 for coldest  
 areas



**INVERSE:**  
 Same as Fire  
 scheme but  
 White & Black  
 are inverted:  
 White = Cold  
 Black = Hot



**MULTICOLOUR:**  
 For Industrial  
 applications

### 3 Sensitivity modes with automatic switch according observed scene:

- High sensitivity temperature range: -40 +150 °C
- Medium sensitivity temperature range: -40 + 500 °C
- Low sensitivity temperature range: -40 +1150 °C

As part of our policy of constantly researching to improve our equipment, we reserve the right to change the characteristics of our apparatus at any time without prior notice.  
ZF.07.325.EN.4

**LEADER**  
 Tomorrow's technology today

# Characteristics:

Leader TIC 4.3 with Eco-Boost-System	
<b>Dimensions</b>	L.175 x W.145 x H.97 mm (H = +110mm with optional pistol grip)
<b>Weight</b>	950g with 2 batt / 865g with 1 batt (+170g with optional pistol grip)
<b>Display</b>	4" LCD / 320 x 240 (76.800) px / Backlighted / Brightness: 800 cd/m <sup>2</sup>
<b>Frequency</b>	60Hz Fps
<b>T°C Range</b>	-40° to +1150°C
<b>Colorization</b>	Std: Fire, Search, Inverse Option: Cold finder and Multicolour
Housing	
<b>Material</b>	PUR / Elastomer
<b>Drop Test</b>	2m on concrete
<b>IP</b>	IP67 / 1 Meter 30 Minutes
<b>Heat resistance</b>	150°C for 15min / 260°C for 5min
Sensor	
<b>Micro bolometer type</b>	Uncooled 17µ Amorphous Silicon aSi Resolution <b>384 x 288</b> (110 592 px)
<b>Spectral range</b>	7 – 14 µm
<b>Thermal sensitivity</b>	NETD: <50mK (<0.05°C)
Optic	
<b>Material</b>	Germanium Carbon Coated Protected by a germanium window
<b>Focus</b>	0,35m to infinity / F/1.3 speed
<b>Visual field / FOV</b>	H: 51° / V: 40° / Diagonal: 65°

General	
<b>Rechargeable batteries</b>	LiFePO <sub>4</sub> (Lithium Iron Phosphate = safety VS fire), 2.5Ah at 6.6V, 85g
<b>Running time (20°C)</b> with Eco-Boost-System since October 2018	<b>Without video/photo functions:</b> >8h (2 batt) / >4h (1 batt) <b>With video/photo functions:</b> >6h (2 batt) with non-active video >5h (2 batt) with recording video
<b>Boot time</b>	< 5 seconds
<b>Charging voltage</b>	12 / 24 VDC or 100-240 VAC
<b>Charging time</b> (for 2 batt / consider half for 1 batt)	Charging bay: ~1h30 Mains charger: 100% in ~2h, 90% in ~1h30, 80% in ~1h20
<b>Charging cycles</b>	> 5000
<b>Memory (optional)</b>	8GB internal SD card (8h video or 1000 pics)
<b>Warranty</b>	<b>5 years</b> on camera / <b>6 years</b> on batteries / <b>10 years</b> on thermal sensor / <b>1 year</b> on accessories (chargers, charging bay, etc...)
Options	
Removable pistol grip	Picture capture and/or video recording (8GB capacity)
Neck strap in flame retardant material	Vehicle charging bay or mains charger
1 or 2 Retractable lanyards	Carrying case IP67
Protection hood	Wireless video transmission to computer, tablet or smartphone
Analogue output (NTSC or PAL)	

## Energy concept

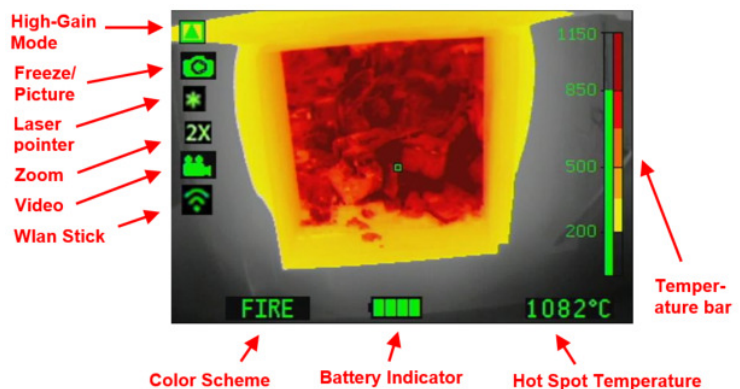
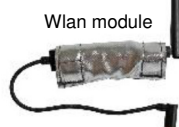
LiFePO<sub>4</sub> batteries (lithium-iron-phosphate).

### Benefits:

- Very long lifespan guaranteed 5000 charging cycles (~10 years)
- Operating time (8h with 2 batteries at the same time in the camera)

## Picture capture & Video recording

- Pictures (up to 1000) and Video (up to 8h) can be:
- viewed on the camera screen during operation
  - Live Pictures can be sent to a computer, tablet or smartphone thanks to optional wireless stick.
  - Downloaded into a computer via a USB cable



## Vehicle Charging Bay

Very space-saving mountable!  
Power supply 12/24 VDC or 100-240 VAC. Can charge up to 4 batteries at the same time (2 in the camera and 2 spares)



As part of our policy of constantly researching to improve our equipment, we reserve the right to change the characteristics of our apparatus at any time without prior notice.  
ZF.07.325.EN.4















## Camera standard features:

Description	Colour modes			Features							
	Color modes	Optional color modes	Max color modes	Battery	Freeze mode	Side trap	Video recording	Picture capture	Laser	Zoom	USB cable
LEADER TIC 4.3	Fire & Search & Inverse	Multicolour or Cold	5	2	√	2				√	
LEADER TIC 4.3 L			5	2	√	2			√	√	
LEADER TIC 4.3 V			5	2	√	2	√	√		√	√
LEADER TIC 4.3 VL			5	2	√	2	√	√	√	√	√

V= Video + Picture

L = Laser

## Camera optional accessories:

	<b>Wireless Transmission kit</b>	Only compatible with cameras equipped with Video recording		<b>Vehicle charging bay with additional slots</b>	Charge batteries in the camera + 2 extra spare batteries
	<b>Pack of 2 spare batteries</b>			<b>Power supply for charging bay</b>	Exist in 12/24V and 100V-240V with US or EU plug
	<b>Cable charger for TIC 3 &amp; 4</b>	Available in 12/24V or 100V-240V		<b>Retractable lanyard</b>	500gr or 1000gr tension force
	<b>Watertight Carrying case</b>	IP67		<b>Neck strap</b>	Fire-proof (Kevlar)
	<b>Vehicle charging bay</b>	Charge batteries inside the camera		<b>Protection hood</b>	Increases exposure time x2 to high temperatures
	<b>Laserpointer</b>	Only for 3.3 and 4.3 models		<b>Removable pistol grip</b>	Pistol grip = 170g Incl. mounting tool

